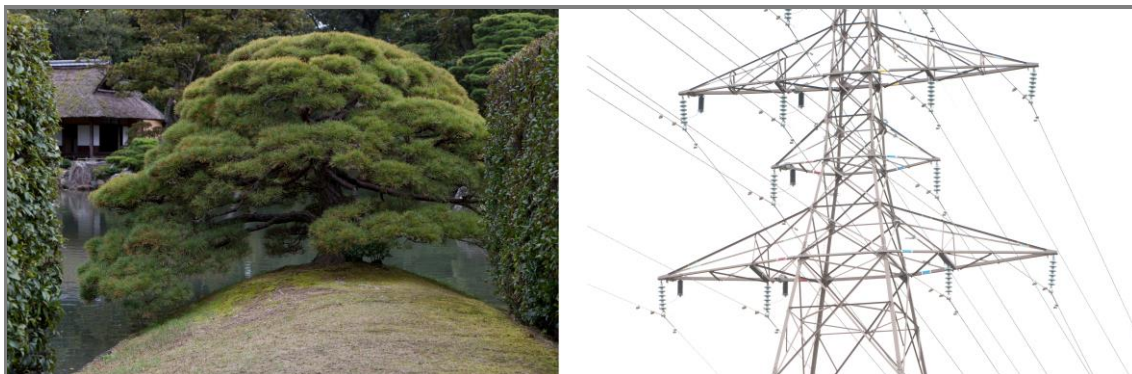

Photographic Memory: The Making of *Mono no aware* Artist Talk & Book Launch

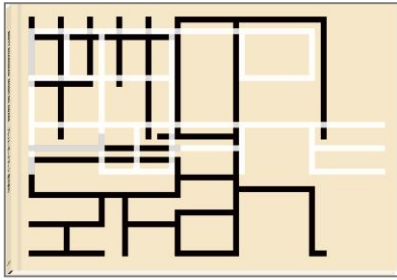
by photographer Brett Boardman



The Japan Foundation, Sydney proudly presents two Artist Talk & Book Launch events by Brett Boardman, to be held on **March 5 (Thurs) & March 6 (Fri), 6-7pm** at The Japan Foundation Gallery. Boardman's talk, titled '**Photographic Memory: The Making of *Mono no aware***', commemorates the opening of his '***Mono no aware: The Poignancy of Things***' exhibition as well as the launch of his **new limited-edition book** of the same name.

The *Mono no aware* image series was shot in Kyoto, Japan, in 2011. It juxtaposes **Katsura Rikyu** (a 17th-century imperial villa known for its iconic architecture) with a nearby homeless person's shelter, revealing unexpected parallels between these two vastly different dwellings. In this talk, Boardman focusses on Katsura Rikyu, showing how its modern history is intricately linked to its published image, and also opens up about the influence of Japanese print making and publishing on his artistic practice and thought. In doing so, he sheds light on the creative process behind the *Mono no aware* sequence of images as a whole.

Says Boardman: "The original intent of the Katsura shoot was to see what is *possible* to photograph in a site that has been extensively documented. The outcome—which included discovering and photographing a nearby homeless person's shelter—raised questions and led me to reevaluate how meaning can be communicated through images. I'm delighted to be able to share this journey through the exhibition, my new book, and also these talks."



Boardman's book—which, like the exhibition, is titled ***Mono no aware: The Poignancy of Things***—is a bespoke large-format hardcover publication showcasing the entire *Mono no aware* series. The book will be produced in a limited-edition print run of 200, with each copy including one pair of signed and numbered prints. It

will be available for the launch price of \$250 (RRP \$300) at the talk event on March 5, and in the lead-up to this date via the publisher, architecture and design specialists [Uro Publications](#).

Free CHOYA (Japanese sweet fruit liqueur) tastings also available on the night.



This event runs in conjunction with **Art Month 2015**.

****Note: RSVP essential****

EXHIBITION



Mono no aware: The Poignancy of Things

Photography by Brett Boardman

February 26 – April 11, 2015

The Japan Foundation Gallery

Gallery hours

Monday – Thursday: 10am – 8pm

Friday: 10am – 6pm

Saturday: 10am – 3pm (except March 7 & April 4)

Closed Sundays & Public Holidays

TALK EVENTS {Places limited; RSVP essential}

March 5 & 6 **Photographic Memory: The Making of *Mono no aware***
6pm – 7pm Artist Talk & Book Launch by Brett Boardman

March 14 **Tokyo Void: Possibilities in Absence**
2pm – 3pm Public talk by Dr Heike Rahmann (RMIT University)

Venue: **The Japan Foundation Gallery**
The Japan Foundation, Sydney
Level 4, Central Park
28 Broadway
Chippendale NSW 2008

Admission: Admission is free. RSVP essential for talks.

Enquiries/RSVP: reception@jpf.org.au / 02 8239 0055

Website: www.jpf.org.au

ABOUT BRETT BOARDMAN



Brett Boardman is a Sydney-based photographer specialising in architecture, landscape and portraiture. Boardman trained as an architect before turning to photography, which he has pursued professionally over the past 20 years. In that time, commissions have taken him throughout Australia, Asia, North America and Europe, and his work has been exhibited and published extensively worldwide. He is a regular commentator and lecturer on critical aspects of the nature of architectural photography and representation. Boardman was awarded Australian Professional Photographer of the Year in 2005.

ABOUT KATSURA RIKYU (KATSURA IMPERIAL VILLA)

Katsura Rikyu is a former imperial residence built in Kyoto, Japan, in the 17th century. It exemplifies the pinnacle of traditional Japanese architecture, and its simple aesthetics, functionality and use of modular space continued to be an inspiration for some of the biggest names in architecture, including Le Corbusier.

ABOUT THE *MONO NO AWARE* EXHIBITION

Further details available in the exhibition media release. Download here:
<http://www.jpf.org.au/mediareleases.html>

ABOUT THE JAPAN FOUNDATION, SYDNEY

The Japan Foundation, Sydney is the Australian arm of the Japan Foundation, which was established by the Japanese government to promote cultural and intellectual exchange between Japan and other nations. It runs a diverse range of programs and events, including exhibitions, talk events, grant programs and Japanese language courses for all levels from beginner to advanced. The Japan Foundation was established in 1972 with a global network of 22 offices in 21 countries. The Australian office was founded in 1977.



@japanfoundationsydney



@jpfsydney

For more information please see www.jpf.org.au or contact:
Elicia O'Reilly (02) 8239 0062 / elicia_oreilly@jpf.org.au or
Jessica Chow (02) 8239 0023 / jessica_chow@jpf.org.au

Presented by



Supported by

CHOYA



####